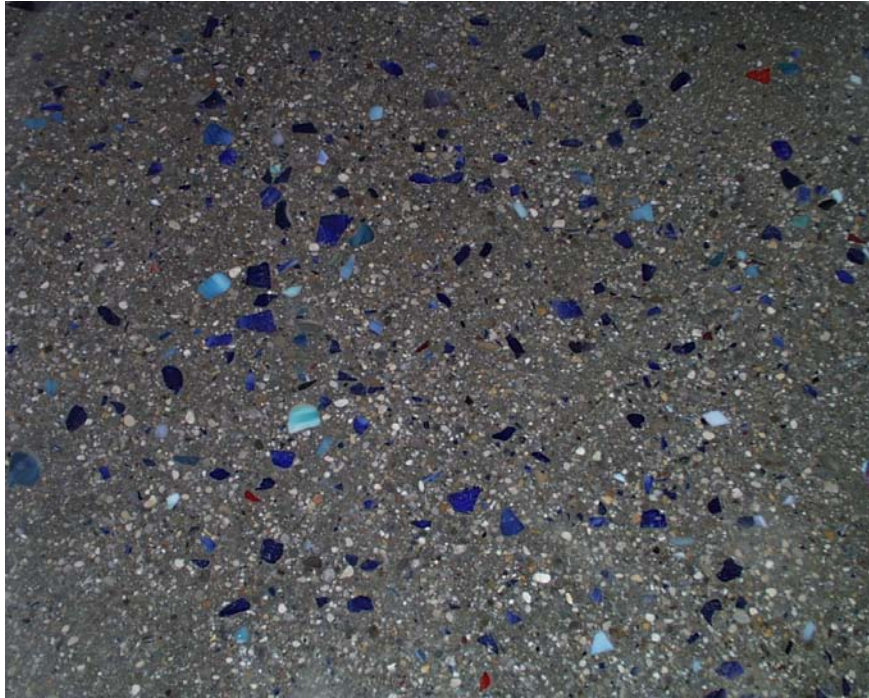


CONTEC



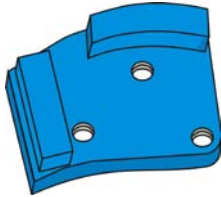
Selecting the correct tools for the effective operation of our floor grinders - Alpha, Omega, Delta II and Orbiter for applications including Surface Preparation, Terrazzo, Polished Concrete and the removal of coatings.



1. Surface Preparation

- Grinding of concrete and screeds (Grinding to the aggregate, removal of the laitance and loose material)
- Removal of uneven areas, trowel marks or edges
- Preparation of the surface for coatings, self levellers, glue...

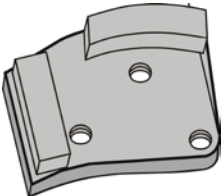
Hard surfaces:



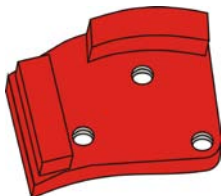
- **CS 16** or **VS 1 blue** (Segment has soft bond with coarse diamonds, rough finish, dry grinding)

alternative:

- **CS 40** (as CS 16 but finer diamonds)



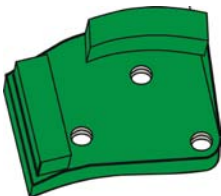
Abrasive or soft surfaces:



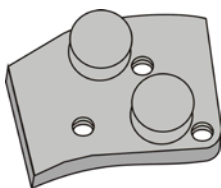
- **CA1** or **VS 2 red** (Segment has hard bond with coarse diamonds, rough finish, dry grinding)

alternative:

- **CA 2** (as CA1 but finer diamonds)



High density floors with hard aggregate on the surface:



- **MBC 0+** or **VS 0** (Segment has soft bond and coarse diamonds, rough finish, dry grinding)

alternative:

- **PCD-Grit** (extremely rough finish)

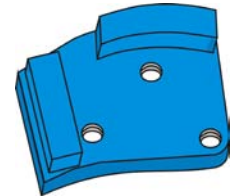
2. Terrazzo Floors / Polished Concrete

Several stages of grinding using diamond tools of different grits and bonds up to a polished finish. If necessary up to 5 mm of the surface may be ground away to remove all holes, pores or porosity depending on the floor. Any remaining imperfections are grouted and then polished.

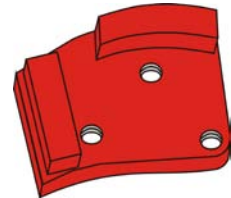
First grinding (step 1)

Diamond plate “square“ - Dry grinding

Hard floors: starting with **CS 16** or **VS 1 blue**
(coarse diamonds)
next step **CS 40** for a finer finish



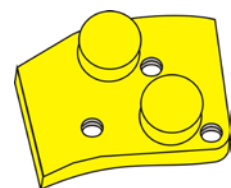
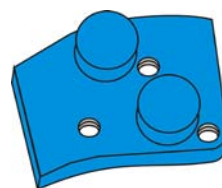
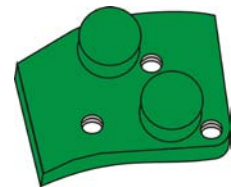
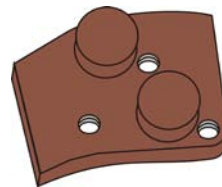
Soft floors: starting with **CA1** or **VS 2 red**
(coarse diamonds)
next step **CA2** for a finer finish



Fine grinding (step 2)

Diamond plate “round“ - Dry or wet grinding

MBC 0 (Grit 40 brown)
MBC 1 (Grit 100 black)
PS 1 (Grit 100 black)
MBC 2 (Grit 200 green)
MBC 3 (Grit 300 blue)
PS 3 (Grit 300 green)
MBC 4 (Grit 500 yellow)
PS 6 (Grit 600-800 gold)



Depending on the composition of the floor some grinding steps can be dropped. If it is a dense concrete floor, the grades MBC 2 and MBC 4 are normally adequate. Wet grinding will achieve a finer finish.

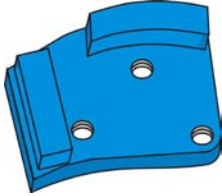
Polishing (step 3)

Grind with polishing buttons – wet or dry, until the required surface finish is achieved. Different grades of the buttons are available from 50 to 5000 grit. The floor must be cleaned between the different steps.



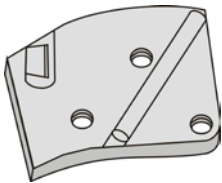
3. Removal and grinding of epoxy coatings glue and paint

Grinding of epoxy or polyurethane coatings



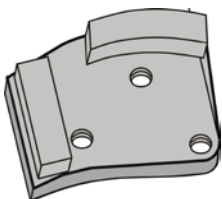
- **CS 16** or **VS 1 blue** (Segment has soft bond and coarse diamonds, rough finish) ideal surface preparation prior to application of a new coating or sealer.

Removal of elastic materials, glue and self levelers

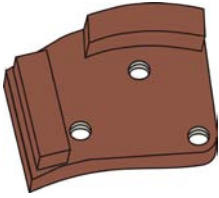


- **PCD - plates**
- **Important** – check the direction of rotation of the discs, do not use on plain concrete!

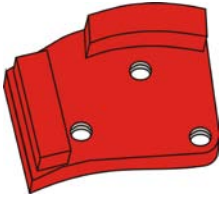
Removal of resin coatings



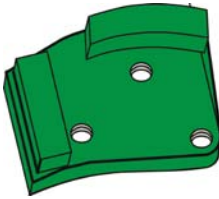
- **PCD - grit** (Segment has rough diamond grit for the aggressive grinding of hard glue and resin on hard concrete surfaces, very rough finish!)



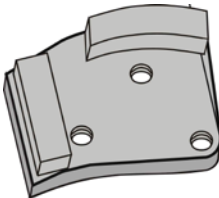
- **CA 1 / VS 0 grit size 16-18 hard bond**



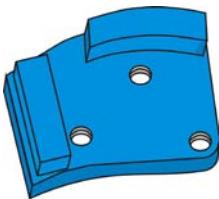
- **CS 16 grit size 6-16 soft bond**



- **CA 2 grit size 40-60 hard bond**

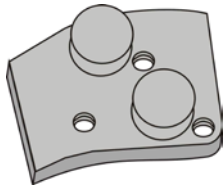


- **CS 16 grit size 16-18 soft bond**

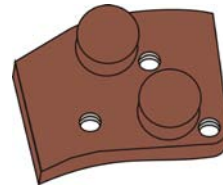


- **CS 40 / VS 1 grit size 40-50/60 soft bond**

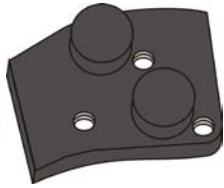
Diamond	Color	Grit size	Bonding
CA1	brown	16-18	hard
CA2	green	40-60	/
Cs06	red	6	soft
Cs6/16	gold	6-16	/
Cs16	silver	16-18	/
Cs40	blue	40-50	/
C1	yellow	16-18	middle
C2	purple	40-60	/
VS 1	blue	40-60	soft
VS 2	red	40-60	hard



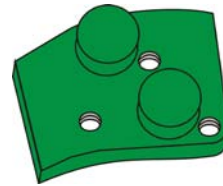
MBC 0+ / VS 0



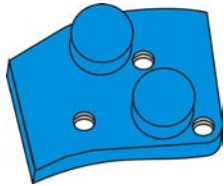
MBC 0



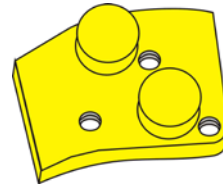
MBC 1 / PS 1



MBC 2 / PS 3

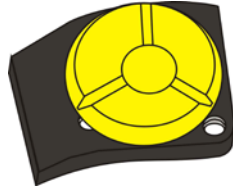


MBC 3



MBC 4 / PS 6

Diamond	Color	Grit size	Bonding
MBC0+ / VS 0	silver	16-18	Very soft
MBC0	brown	30-40	/
MBC1 / PS 1	black	100	/
MBC2	green	200	/
MBC3 / PS 3	blue / green	300	/
MBC4	yellow	400-500	/
PS 6	gold	600-800	/



Grit size polishing dot	Color
30 (wet)	Brown
60 (wet)	Green
120 (wet)	Black
220 (wet)	Red
400 (wet)	Yellow
800 (wet)	White
1800 (wet)	Blue
3000 (wet)	Grey
5000 (wet)	Pink
60 (dry)	Green
120 (dry)	Black
220 (dry)	Red
400 (dry)	Yellow
800 (dry)	White
1800 (dry)	Blue
3000 (dry)	Grey